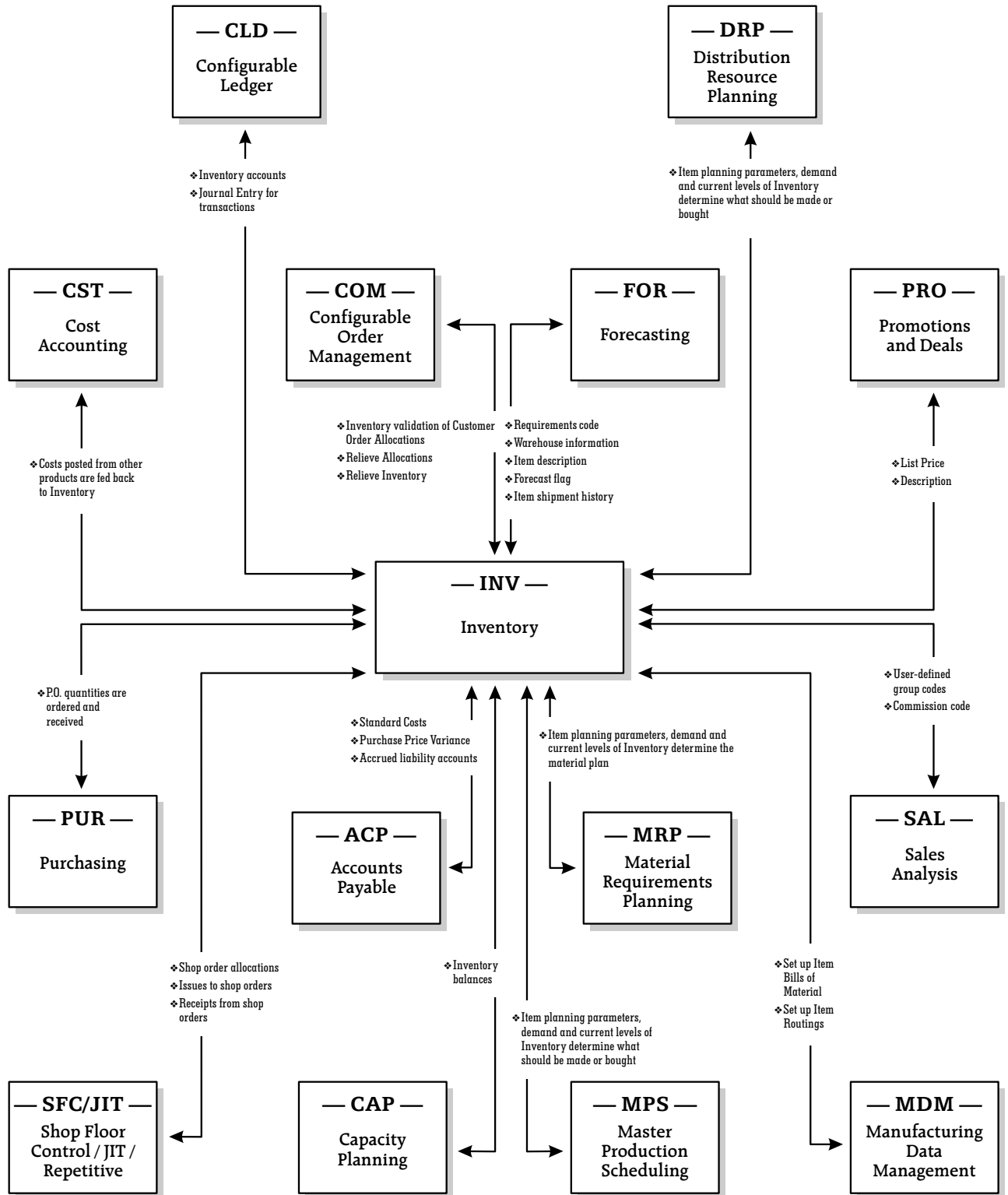


Inventory BPCS Product Integration



Unbeaten Path®

INV Maintenance Cycle: Key Program Features

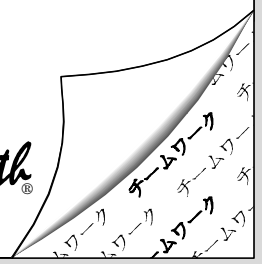
Item Type Maintenance INV171

This program defines the different categories of material inventory, such as raw material, work-in-process and finished goods. Each item type is defined with a single-digit alphanumeric code. Item type is also a required field on the Item Master Maintenance program (INV100).



Field Descriptions

- ∇ Item type description
 - ◇ a 12-character alphanumeric field
- ∇ Item type general ledger number
 - ◇ this field is no longer used to control general ledger account number
- ∇ Manufacturing flag: (*Y, N or blank*)
 - ◇ Yes = manufactured and used with MRP540 & JIT540 release programs
 - ◇ No = purchased and used with PUR640 release program
 - ◇ " " (blank) = neither manufactured nor purchased (i.e. a phantom, kit or assortment item type would be "blank")
- ∇ Inventory Accuracy %: (*5, 2*)
 - ◇ Allows for an inventory cycle count tolerance by item type
 - ◇ Interfaces with the Performance Measurement module (PRF)



INV Maintenance Cycle: Key Program Features

Item Master Maintenance INV100

Field descriptions continued from previous page.



Bounded Disposition-related Fields

*The following fields are for **display only***

∇ Bounded parent: (15, a)

◇ will display if the item has a bounded parent at the global level; BPCS will display the item number

∇ Bounded parent material method code: (2, 0)

◇ displays the method code used for the parent item

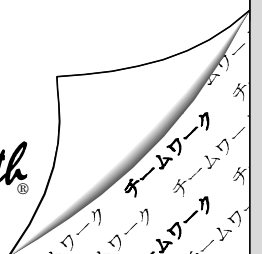
∇ Bounded child: (15, a)

◇ displays the item number for the bounded child

∇ Bounded child material method code: (2, a)

◇ displays the method code for the child item

Bounded relationships, if they exist, appear when maintaining the Item / Facility Planning Data Panel (see MRP140 program).



INV Maintenance Cycle: Key Program Features

Lot Master Maintenance INV130

Field descriptions continued from previous page.



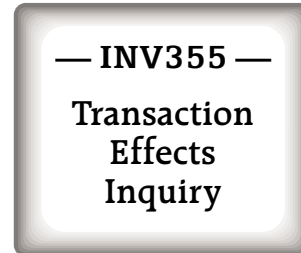
Fields Relating to the Lot Characteristics

- ∇ Lot potency
 - ◇ this field appears if the API module is installed
 - ◇ the system will compare the "Lot Potency" to the "Std Item Potency" to determine the actual quantity of material to allocate to shop orders for fixed batch balancing
 - ◇ this value can be manually entered for changes or updates
- ∇ Standard item potency
 - ◇ this is a display field; BPCS uses the value from the Item Master file (IIM) from the Item Master program (INV100)
- ∇ Unit / measure: (2, a)
 - ◇ this is a display field; BPCS uses the stocking unit of measure
- ∇ Lot status: (1, a)
 - ◇ enter one of the lot status codes listed below:
 - A ... lot is Active and may be processed in any manner
 - C ... Conditional pass
 - E ... lot has Expired
 - H ... lot is on HOLD
 - Q ... lot is on "Quality hold" – warnings are displayed when processing inventory transactions
 - R ... lot has been Rejected
 - V ... lot has been archiVed
 - Z.... lot is deleted or completed

Transaction Effect Inquiry

Transaction Effect Inquiry INV355

This program is used to view the definition of each transaction type that was created through the maintenance program (INV150).



Field Descriptions

∇ Displays "Y / N or blank" for each field in the following areas:

- ◇ Inventory balances
- ◇ Purchase order / shop order processing
- ◇ Standard cost processing
- ◇ Material backflushing
- ◇ Warehouse / lot / location

■ *The above displayed definitions will describe to the user the inventory effect of a particular type code.*

■ *Remember: Some codes are "reserved" by the system.*

One-Step Cycle Counting Sequence Number Logic

